



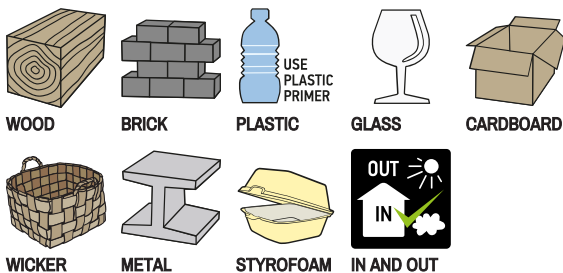
ZERO WATER-BASED LACQUER



MASTON ZERO® IS THE SAFEST AND ENVIRONMENT FRIENDLIEST SPRAY PAINT EVER MADE!

Because of its unique water-based technology, Maston Zero® does not contain any added solvents making it safe to be used inside and outside with no unpleasant smells. The VOC content is reduced to only 216 g/l making the product completely non flammable and safe to use in any environment. One cross layer is enough to create immediate coverage with a film thickness of 25 to 30 microns and no run downs. The paint can be re-coated any time, wet-on-wet or wet-on-dry. Surface is touch dry after 90 minutes and dry after 48 hours. Maston Zero® is great to use on many projects inside and outside of the house including Polystyrene. The unique formulation contains no solvents in the paint and reduces the contents propellants only to 24% of the weight, allowing more paint inside. NB! Clean the drip nozzle whenever you release the nozzle.

MATERIAL



BINDER: Waterbased

DEGREE OF GLOSS (DIN 67530 60 °):

matt 0-25 gloss units

satin 40-60gloss units

gloss 80-100 gloss units

HEAT RESISTANCE: 80°C

STORAGE STABILITY: 36 months

SIZE: 400ml

SALES QTY:

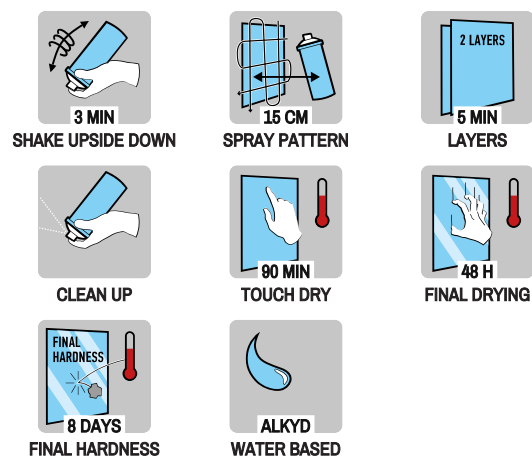
400ml: 6 pcs

USAGE INSTRUCTIONS:

Instructions Do not spray more than 30 seconds without shaking in between. Wipe the nozzle after or before each spray to avoid paint spitting. It is recommended to rinse the nozzle with warm water after use. Make sure the nozzle is dry before next use.

When using the product indoors, ensure that the area within at least a 5-meter radius of the painted object is protected. Paint dust is lightweight and can spread over long distances through ventilation.

HARDNESS



MASTON Zero Water-based Lacquer

Art. No.	MASTON Zero Water-based Lacquer	Color	Barcode
1370332	Spraypaint Zero Lacquer Gloss 400ml	○	6412490033033
1370331	Spraypaint Zero Lacquer Matt 400ml	○	6412490033026
1370332-EU	Spraypaint Zero Lacquer Gloss 400ml	○	6412490034849
1370331-EU	Spraypaint Zero Lacquer Matt 400ml	○	6412490034832